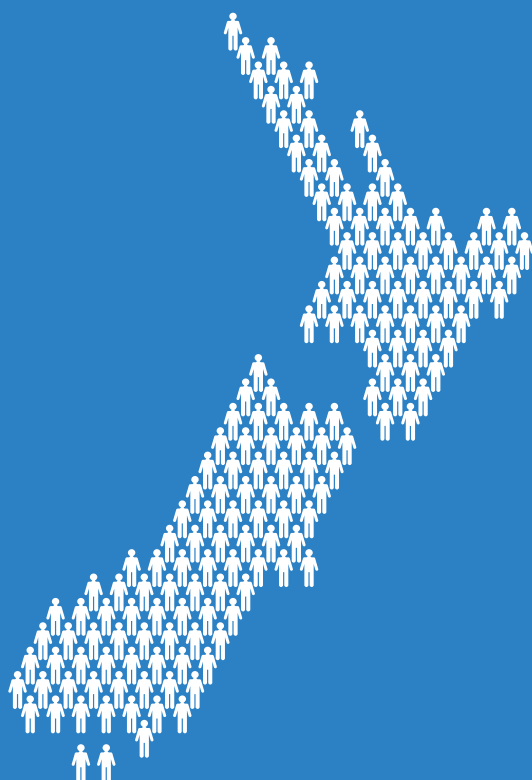


# Ngā tatauranga o te tau o te rāngai

## The sector's year in numbers



*\* Registered charities that are affiliated or closely related, and have similar charitable purposes, can apply to register as a group under the Charities Act 2005.*



More than **170,000 volunteers**  
contribute approximately **1.6  
million hours every week**

More than **138,000 people** work  
full time in the charitable sector.  
This is equal to approximately **5%**  
**of the New Zealand workforce**

### 1,472 REGISTRATION DECISIONS

**1,477** Applications received

**1,270** Applications approved

**202** Applications withdrawn

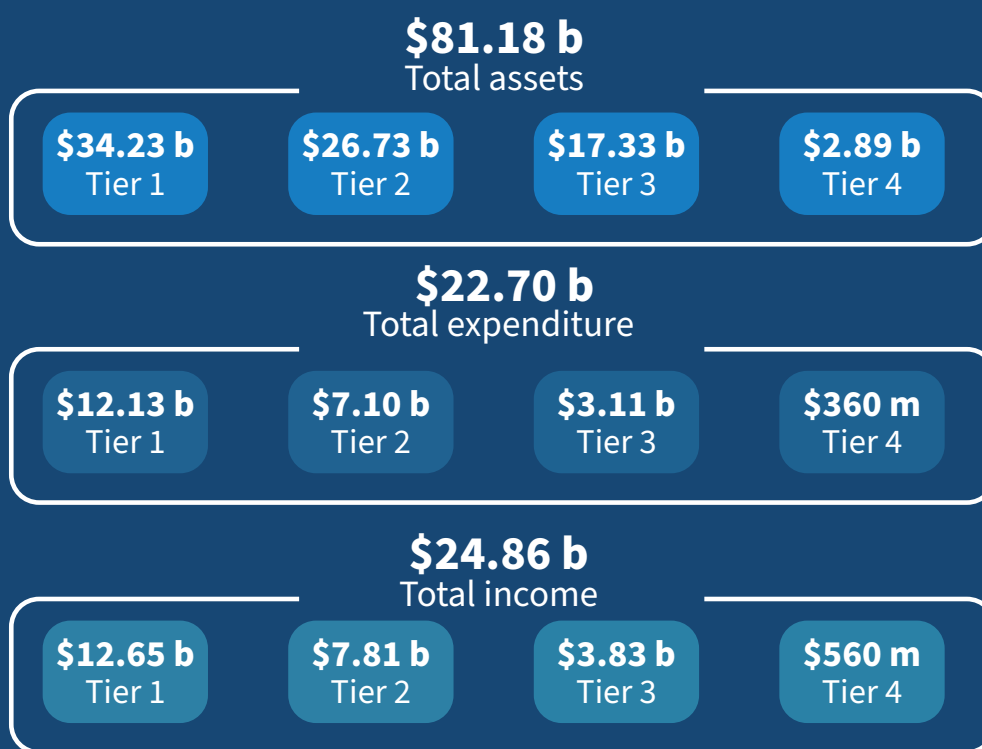
**0** Applications declined

### 969 CHARITIES DEREGISTERED

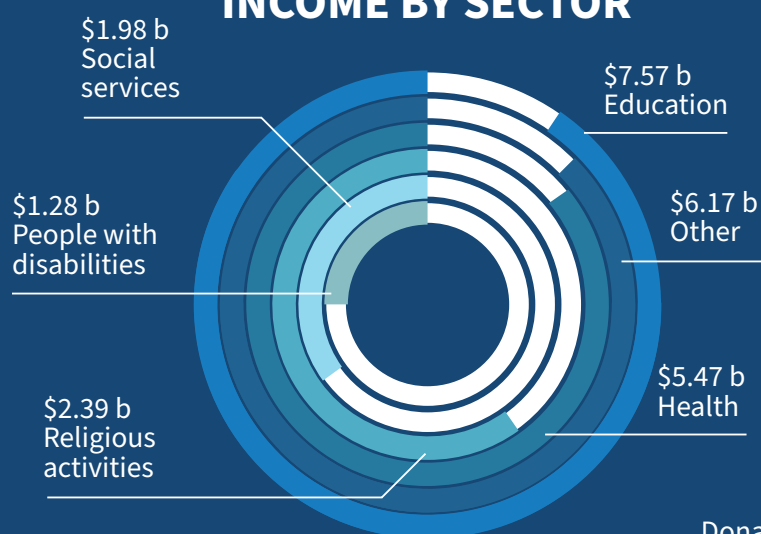
**342** Failed to file annual returns

**627** Voluntarily deregistered

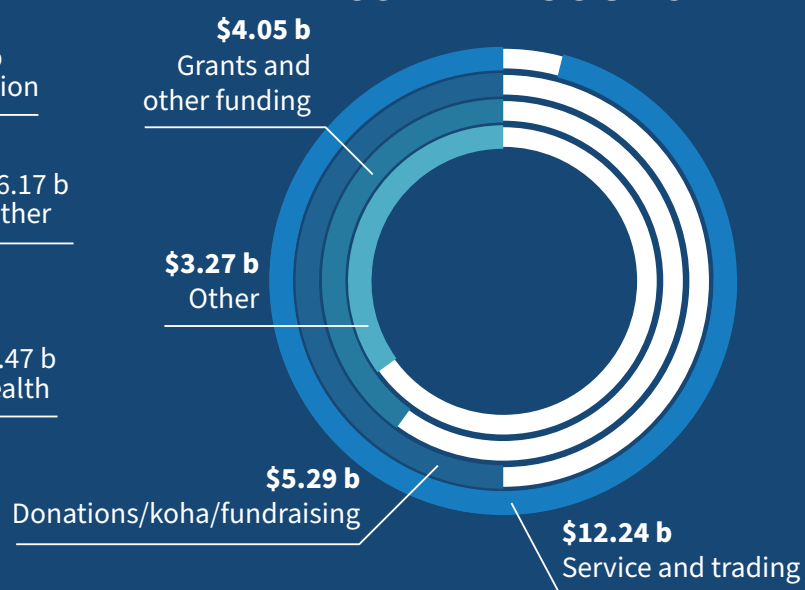
**0** deregistered for serious  
wrong-doing



## INCOME BY SECTOR



## INCOME BY SOURCE



Of the **1,502** registered charities that reported overseas activities, the top five areas of operation are:



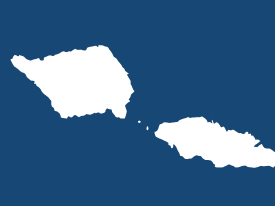
**Australia**  
**32%**



**Fiji**  
**27%**



**India**  
**22%**



**Samoa**  
**22%**



**Tonga**  
**21%**