

The sector's year in numbers

In Aotearoa there are:

27,791
registered charities



104,547
individual
charity officers



212
groups



More than **145,000** people work full time in the charitable sector.
This is equal to approximately **5%** of the New Zealand workforce.



More than **217,000 volunteers**
contribute approximately **1.7 million**
hours every week.

1,727

REGISTRATION
DECISIONS



1,568 applications received

1,496 applications approved

231 applications withdrawn

0 applications declined

782

CHARITIES
DEREGISTERED



396 failed to file
annual returns

385 voluntarily deregistered

1 deregistered for serious
wrongdoing



Total assets **\$67.85 billion**

\$28.09 b
TIER 1

\$22.08 b
TIER 2

\$15.13 b
TIER 3

\$2.55 b
TIER 4



Total expenditure **\$19.87 billion**

\$10.82 b
TIER 1

\$5.92 b
TIER 2

\$2.78 b
TIER 3

\$350 m
TIER 4



Total income **\$21.19 billion**

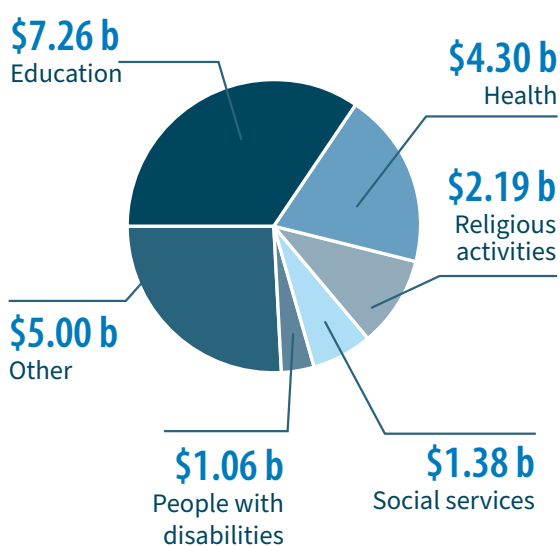
\$10.90 b
TIER 1

\$6.53 b
TIER 2

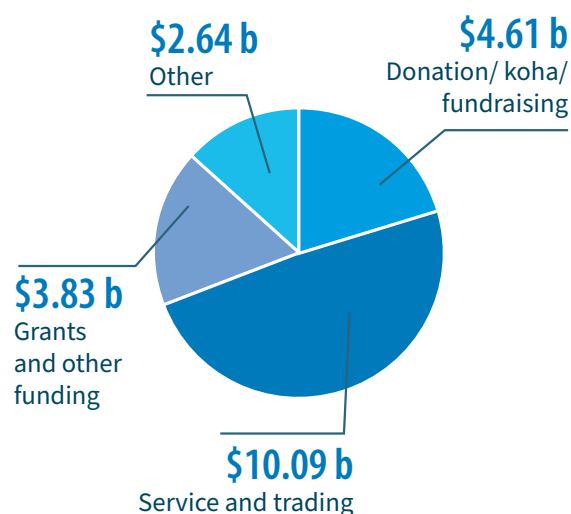
\$3.25 b
TIER 3

\$510 m
TIER 4

Income by sector



Income by source

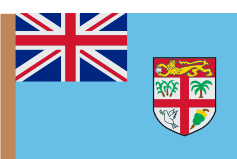


Top five areas:

Of the 2,692 registered charities that reported overseas activities, the top five areas of operation are:



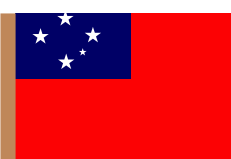
20%
Australia



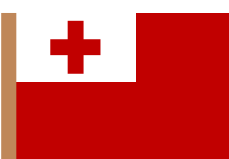
18%
Fiji



15%
India



14%
Samoa



13%
Tonga